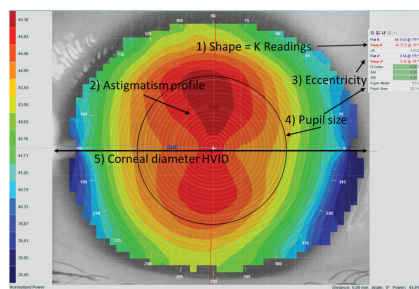


Getting Started

Ideal Patient

- Myopia of 5.00D or less
- Astigmatism $\leq 1.50D$ WTR, $\leq 0.75D$ ATR
- Flat K readings from 40 – 46D
- HVID greater than 11.00mm
- Cornea free of inflammation or disease

Baseline Topography



Although topography is not necessary for the initial fit of the Euclid Ortho-K lens, it's helpful to identify:

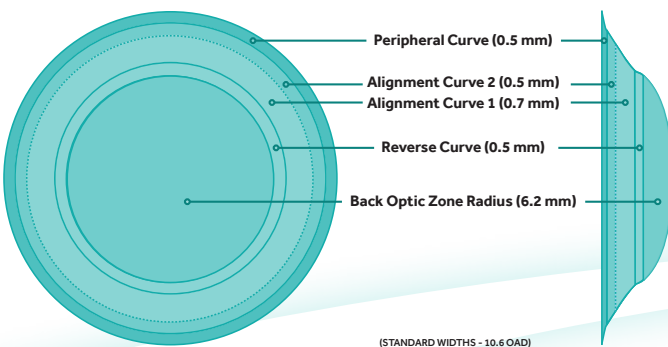
- Initial shape
- Astigmatism profile
- Pupil size
- Corneal size

It also provides for the difference map comparison to be acquired at each follow-up visit.

Choose the Appropriate Design*

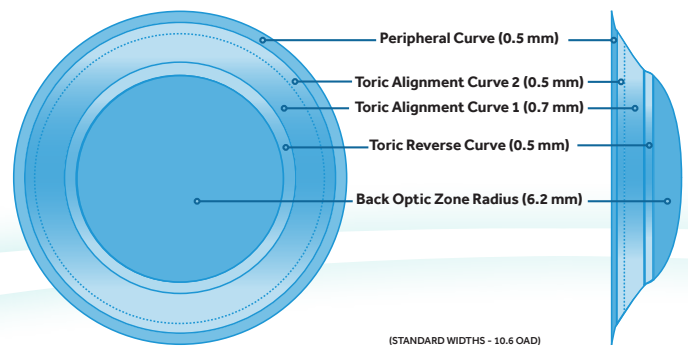
Euclid Spherical Designs: Euclid Max & Euclid Emerald

- No astigmatism
- Apical astigmatism
- Corneal elevation <30 microns



Euclid Toric Designs: Euclid Max Toric and Euclid Emerald Toric

- Limbus to limbus astigmatism
- Corneal elevation >30 microns



Lens Selection

- 30-45 microns elevation difference $\approx 1.00D$ toricity
- 45-60 microns elevation difference $\approx 1.50D$ toricity
- 60-75 microns elevation difference $\approx 2.00D$ toricity

*Some products are only available in certain markets.

Easy Ordering with Three Factor Fitting

To order, call **800.772.3911 option 4**
or email specialtycontactlenses@abboptical.com
with the patient's parameters:

Rx

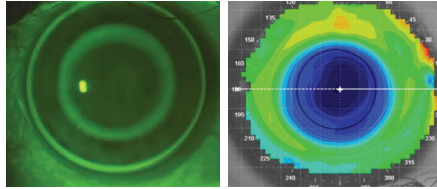
K's

HVID

Teach Your Patient and/or Parent

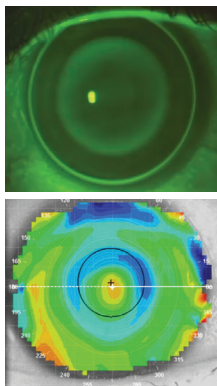
- Application, removal, and proper care and handling techniques
- Lens cleaning and disinfection with an approved non-abrasive GP clean and disinfect system
- Rewetting drop, and lens case replacement schedule are at the discretion of the doctor

Bulls-eye



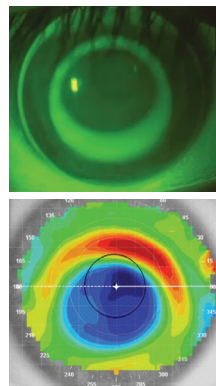
The treatment zone has achieved the desired position and outcome as planned. This is the goal of every Euclid Emerald lens fit.

Clinical Adjustment



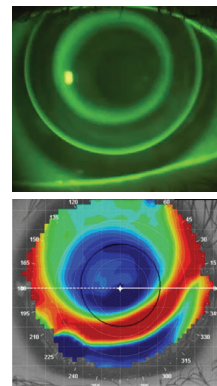
Central Island

- Excessive sagittal height
- Flatten reverse curve by 0.2mm ($\approx 1.00D$) to resolve



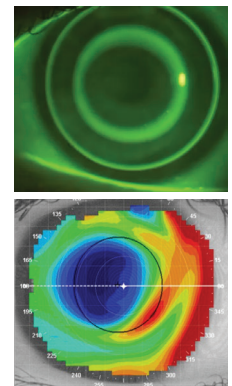
Inferior Decentration

- Excessive sag height vertically, too steep
- Flattening the alignment curves by 0.1mm ($\approx 0.50D$) will usually provide centration
- If Toric, reduce toricity by 15 microns ($\approx 0.50D$)



Superior Decentration

- Inadequate sagittal height, too flat
- Increase the sagittal height by steepening the alignment curves 0.1mm ($\approx 0.50D$)
- If Toric, increase toricity by 15 microns ($\approx 0.50D$)



Lateral Decentration

- Usually indicates lens diameter is too small
- Consider increase of 0.4mm
- Ensure increase in size is still smaller than HVID

Follow-up Protocol

- Check VA
- Check corneal health
- Perform topography
 - Axial, Tangential, Difference maps
- Discuss application and removal
- Discuss lens care
- Do not make lens changes too quickly. Consider waiting 7-14 days before altering fit
- Schedule next visit

Recommended Follow-up Visit Schedule

- 1 day | 1 week | 1 month | 3 months | 6 months | 12 months
- See patients in early AM for 1 day visit.* For other visits, see later in day.

**It's practitioner preference whether lenses are worn into office for day 1 visit*

Our ABB Specialty Vision Consultation Team is with you all the way.
 Call **800-772-3911 option 4** or email **specialtycontactlenses@abboptical.com**